



GMT MONTHLY MEMBERSHIP PROGRESS REPORT

Results as of: 9/30/2019

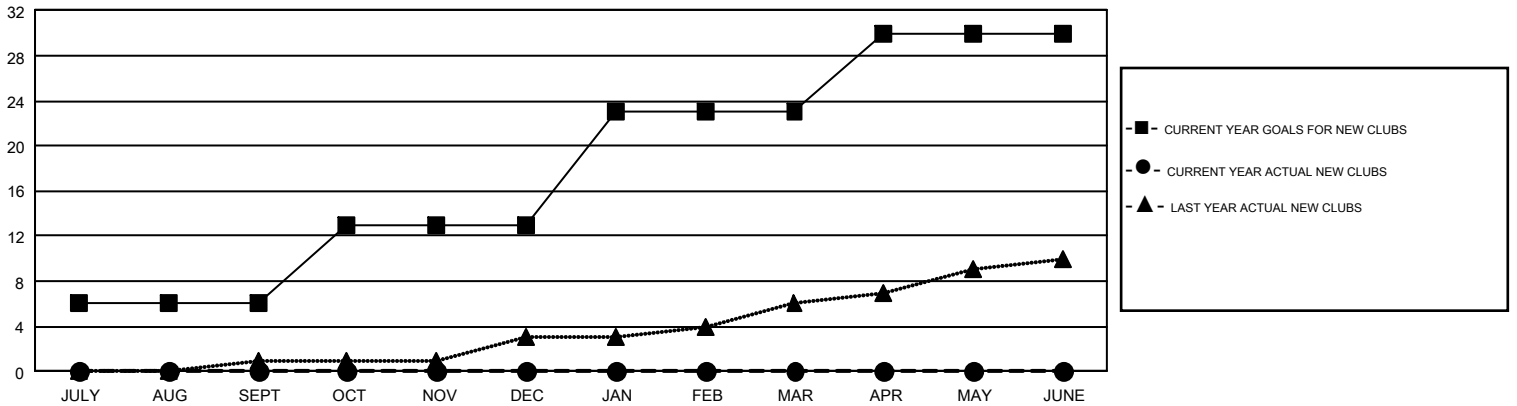
GMT Constitutional Area 1, Group M

GMT: OPEN

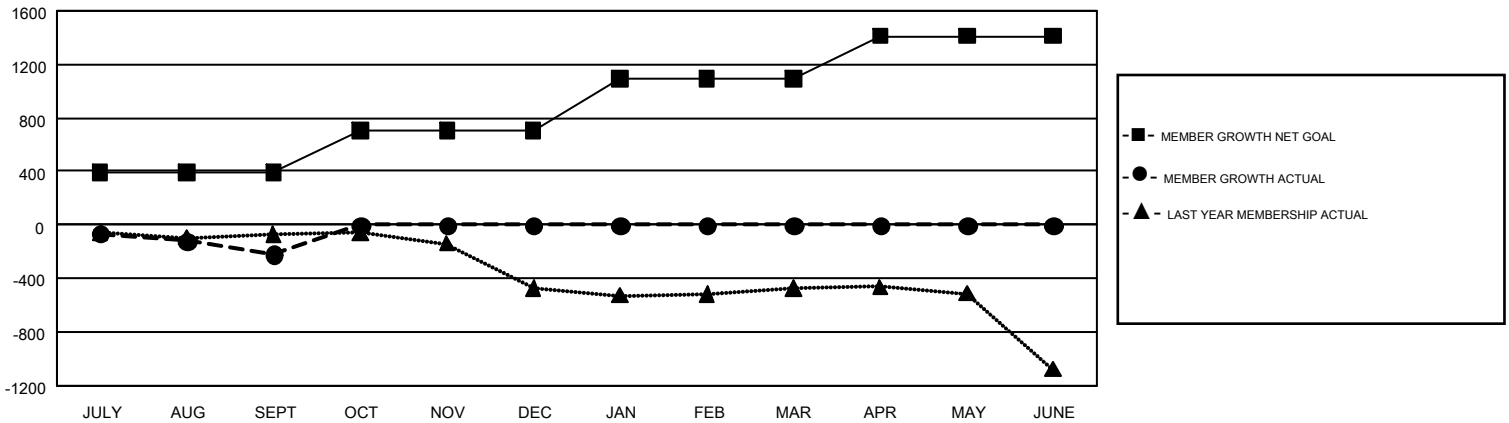
REPORT DOES NOT INCLUDE CLUBS IN UNDISTRICTED AREAS.

Clubs				Members			
RESULTS FOR 2019-2020				RESULTS FOR 2019-2020			
QUARTER	NEW CLUB GOAL	NEW CLUBS	DROPPED CLUBS	QUARTER	MEMBER GROWTH NET GOAL	MEMBER GROWTH ACTUAL	DROPPED MEMBERS ACTUAL (including transfers)
JULY/AUG/SEPT	6	0	6	JULY/AUG/SEPT	390	536	623
OCT/NOV/DEC	7	0	0	OCT/NOV/DEC	314	0	0
JAN/FEB/MAR	10	0	0	JAN/FEB/MAR	388	0	0
APR/MAY/JUNE	7	0	0	APR/MAY/JUNE	318	0	0

GOALS AND ACTUAL NEW CLUBS CUMULATIVE



GOALS AND ACTUAL MEMBERS CUMULATIVE



DROPPED CLUBS: 6	197 CLUBS OF 841 ADDED 1 OR MORE NEW MEMBERS	GENDER DISTRIBUTION MALE 12,079 (64.33%) FEMALE 6,697 (35.67%)
DROPPED MEMBERS DECEASED 80 CLUB CANCELLED 79 OTHER 463 <hr/> TOTAL 622	CLICK HERE FOR CUMULATIVE MEMBERSHIP DATA	TOTAL FAMILY UNIT MEMBERS 3,988 FAMILY MEMBERS PAYING HALF DUES 2,046